

Kontrabass

1. Sinfonie
(1986)

Friedrich Radermacher

Allegro

♩ = 120

pizz.



6



10



15



21



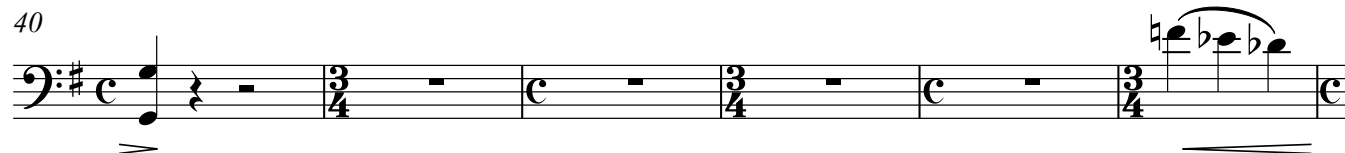
27



33



40



46



52



58



63



69



75



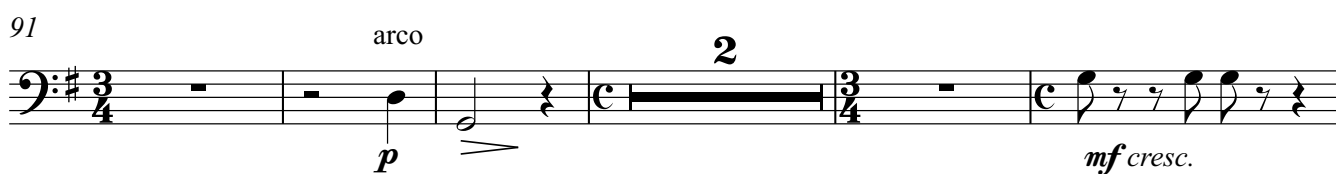
79



82



91



98



103



108



113



118



124



132 rit.

2

C a tempo



140

poco rit.

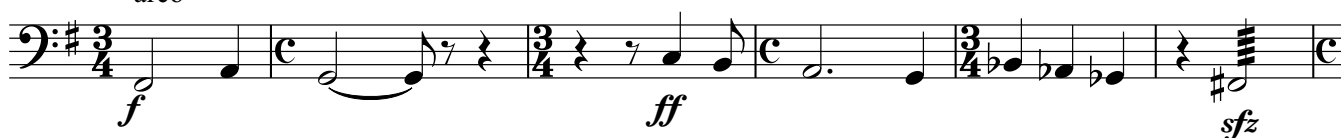
D a tempo

pizz.



146

arco



152



159



165



169



173 **E** **2**

p *f* *ff*

180

184

2. Satz

Poco adagio
♩ = 68 con sord.

p

195

202

210

216

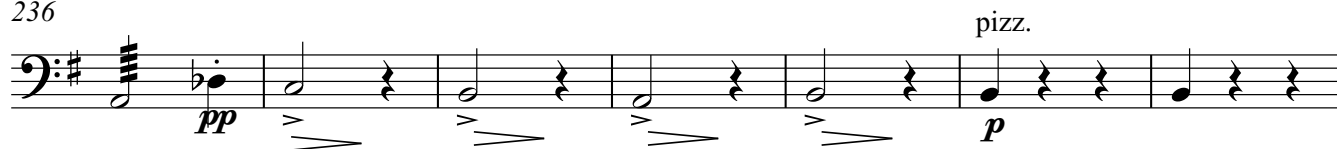
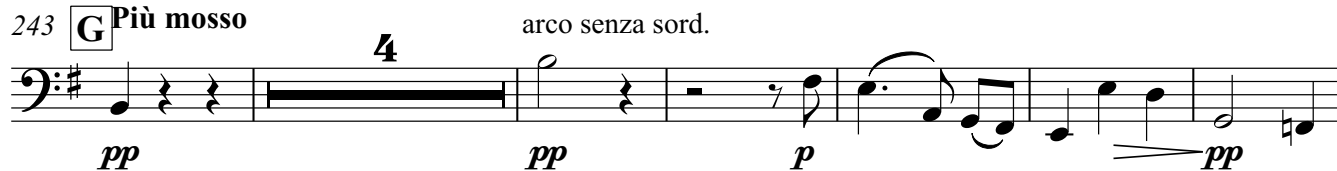
pp

221 **F** simile

f

229

236

243 **G** Più mosso

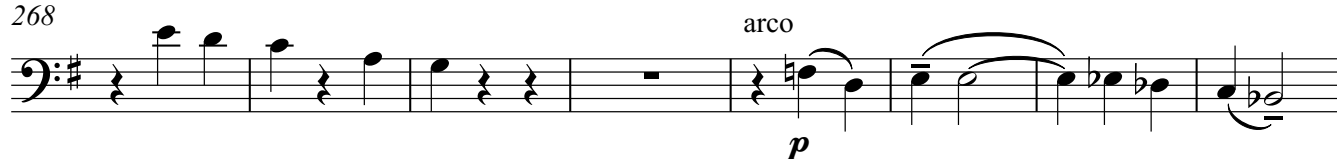
253



261



268



276



284



292



297



302 **I** Tempo 1

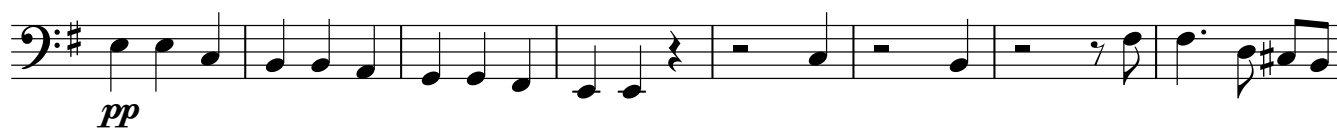
310



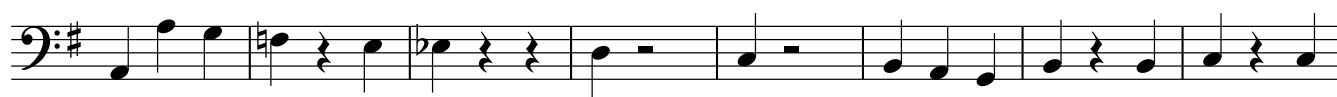
316



324 a tempo



332



340



346



3. Satz

Allegro moderato

6

pizz.

p

7

mf

12

arco

p

17

f

21 **J**

pizz.

p

mf

arco

pp

28

mf

33

ff

ffp

37

f

42

ff

48 **K**

4

52



58



64



69

75 L

81



89



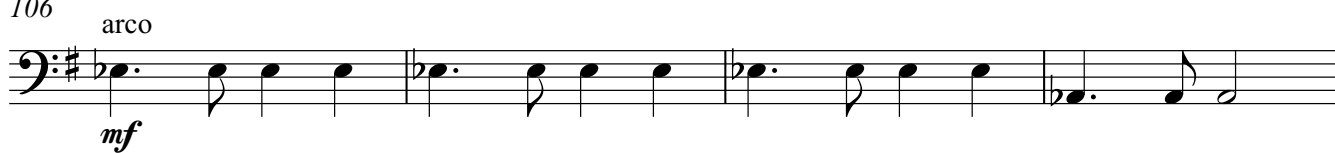
95



101



106

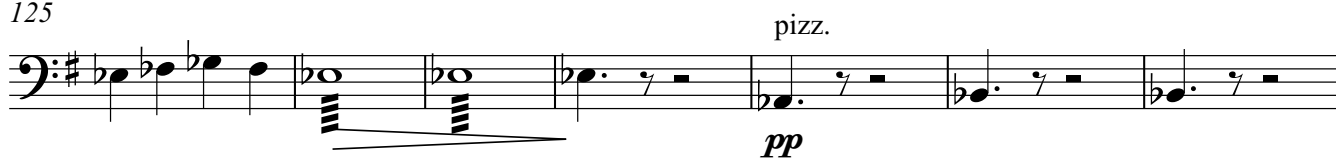


110 **M**

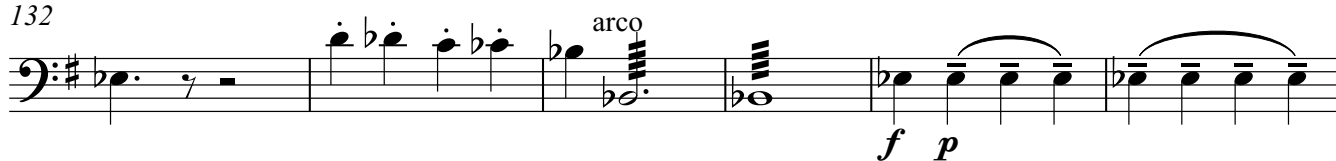
117



125



132



138



147



150



154 *p* *arco* *mf*

160 *sfz* *sfz* *sfz* *ff* *arco*

165 *p* *mf*

170 *f*

175 *ff* *rit.*

4.Satz

Adagio
♩ = 72

pp

191 *8* *rit.* *a tempo* *pp*

205

212 *7* *p* *2*

226 *pizz.* *p*

234 rit. - - - - -

arco

pp

240 - - - - -

ppp perdendosi

5. Satz

Allegro con brio

♩ = 140

7

ff *p*

13

f

19

p

2

25

2

29 pizz. **O**



35



41 *mf*



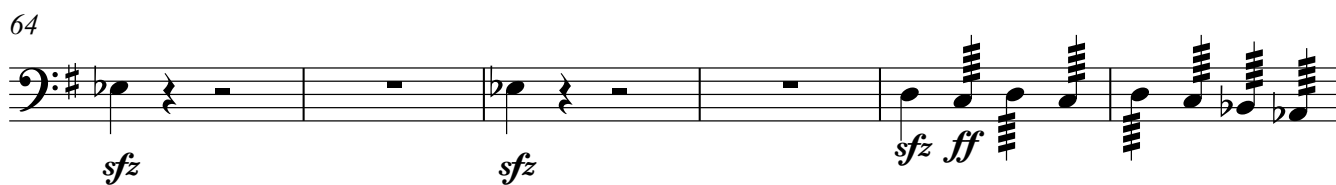
46 arco



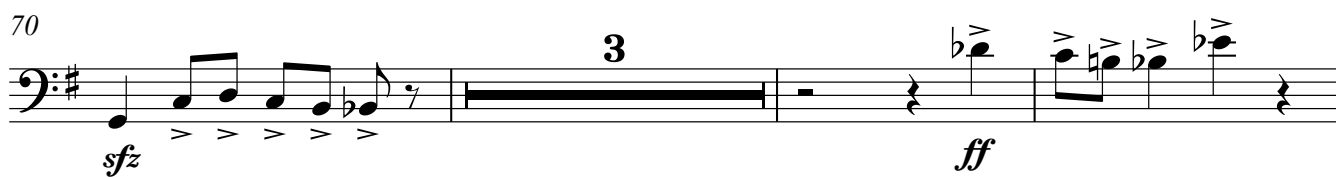
52 **P** *ff* **7**



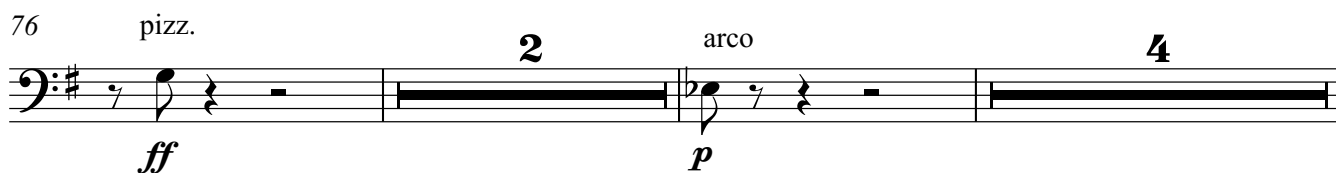
64 *sfz* *sfz* *sfz ff*



70 *sfz* **3** *ff*



76 pizz. **2** arco **4** *ff* *p*



84 **Q** pizz. *p*



90 *mf* *f* *p*



96



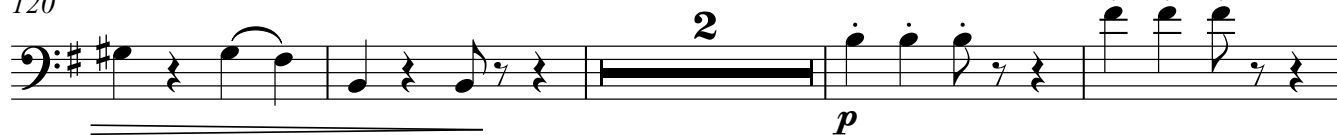
102

106 R

114



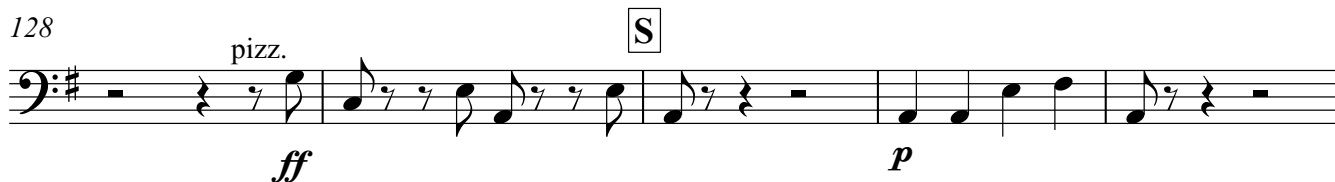
120



126



128



133



139



145



152



157



163



168



175



181



189



27'46.8"